



SPONSORSHIP PROPOSAL

Women's Health Lunch 2025

Friday, 19 September
Grand Ballroom,
Sofitel Melbourne on Collins

Epworth
Medical
Foundation



Epworth

Introduction

Epworth Medical Foundation is pleased to invite you to become a sponsor of the Epworth Women's Health Lunch on Friday, 19 September 2025 at the Grand Ballroom, Sofitel Melbourne on Collins.

This event is an important education and awareness-building event. It also helps to raise funds for new medical equipment, cutting-edge education and ground breaking research at Epworth HealthCare with funds from this year's event being directed to the purchase of medical equipment to support our surgeons at Epworth.

We are delighted to extend this invitation to you to become involved in the Epworth Women's Health Lunch.

Please find the details of the event outlined on the following pages, together with the various opportunities of engagement & associated benefits. We do hope you can join us.



Event Overview

AIM

To educate women about health issues affecting women.

HOST

Ms Cathi Biddick AM

Chair, Special Events Committee

MASTER OF CEREMONIES

Dr Chantel Thornton

Epworth Specialist Breast Cancer Surgeon

GUEST SPEAKERS

To be confirmed

DATE

Friday, 19 September 2025
12noon to 3.30pm

VENUE

Grand Ballroom,
Sofitel Melbourne on Collins

AUDIENCE

Australian business leaders, Epworth's corporate partners, and key philanthropists, alongside Epworth's doctors, clinicians and Executive.

PROCEEDS

All funds raised will go towards the purchase of medical equipment to support our surgeons at Epworth.

BACKGROUND

This is the sixteenth Women's Health Lunch raising awareness of health issues affecting women today and a celebration of the contribution women have made to healthcare and medicine throughout the ages.



Background

Epworth
Medical
Foundation



ABOUT EPWORTH HEALTHCARE

Epworth HealthCare is Victoria's largest not for profit private hospital group, renowned for excellence in diagnosis, treatment, care and rehabilitation. Epworth is an innovator in Australia's health system, embracing the latest in evidence-based medicine to pioneer treatments and services for our patients.

The group provides acute medical and surgical services, sub-acute care, diagnostics and rehabilitation to more than 133,000 inpatients and 156,000 outpatients each year. Epworth is a leader in cardiology, oncology, maternity, urology, gastroenterology, orthopaedics, rehabilitation and mental health.

The organisation has five divisions employing over 8,000 staff with 3,000 accredited medical specialists and 1,000 general practitioners across Victoria.

ABOUT EPWORTH MEDICAL FOUNDATION

Epworth Medical Foundation was established in 1982 to generate much-needed philanthropic support for the activities and equipment needs of Epworth HealthCare.

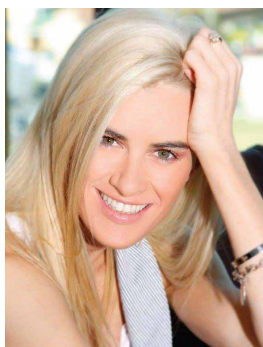
Our goal is and always has been to ensure patients at Epworth receive the best possible care and outcomes. Therefore, funds we raise are used to contribute to and improve the excellence in medical care provided by Epworth HealthCare.

Epworth is an outstanding healthcare organisation but, if we are to achieve our mission of becoming one of the world's truly great academic and teaching hospitals, we rely on philanthropic support.

Donations made to the Epworth Medical Foundation make a real and positive difference to the health and wellbeing of patients and their families.

About the Presenters

Epworth
Medical
Foundation



MASTER OF CEREMONIES

Dr Chantel Thornton (MC) BMSc(Hons) MBBS(Hons) FRACS

Dr Chantel Thornton is passionate about delivering the highest standard of care to patients with breast conditions, including multi-disciplinary care for breast cancer.

Chantel is a breast surgeon specialising in the surgical treatment of breast cancer and all benign breast conditions, including breast reconstruction, sentinel node biopsy, familial breast cancer and risk reduction surgery (skin sparing and nipple sparing mastectomy) and delivery of multi-disciplinary breast cancer care. She has a special interest in oncoplastic breast cancer surgery, a relatively new sub-specialty aimed at maximising cosmetic results with breast conservation surgery. Chantel uses bedside ultrasound and also has the ability to perform core biopsies in the consulting rooms and she works with specialist breast pathologists and radiologists.

Chantel obtained a Bachelor of Medicine and a Bachelor of Surgery (MBBS) with First Class Honours from the University of Tasmania. She was awarded eight university prizes and graduated as Dux of her year in 2000. She also completed a Bachelor of Medical Sciences and received a scholarship to complete an Honours Degree at the University of Hong Kong in 1998.

Chantel became a Fellow of the Royal Australasian College of Surgeons in 2010. She undertook surgical training at The Alfred Hospital and did a Fellowship in Breast Cancer Surgery at the Peter MacCallum Cancer Centre.

Chantel is currently working at the Epworth Hospital Richmond, Peter MacCallum Cancer Centre, Victorian Comprehensive Cancer Centre.

We proudly acknowledge our 2025 Major Sponsor CONQUEST ADVISORY



ABOUT CONQUEST ADVISORY

Conquest Advisory is a multi-faceted firm whose approach is to focus on long term client partnerships. Conquest Advisory provides high quality and market leading private wealth and accounting strategies for individuals, families, institutional clients and corporates. The Conquest Advisory management team and board have extensive experience across financial markets and advice in Australia and internationally.

Corporate Sponsor Opportunities

Epworth
Medical
Foundation



MAJOR SPONSOR

\$25,000 – SOLD

Benefits:

- › Corporate display at the venue
- › Three tables of ten seated in prominent location
- › Brand signage on three tables
- › Key Epworth HealthCare staff seated at your table (optional)
- › Brand acknowledgement in the event program
- › Full page advertisement in the event program
- › Audiovisual brand acknowledgement at the function
- › Acknowledgement by the host during the function
- › Acknowledgement in the Epworth staff newsletter
- › Acknowledgement on the EMF website

ASSOCIATE SPONSOR

\$11,000

Benefits:

- › One table of ten seated in prominent location
- › Brand signage on two tables
- › Key Epworth HealthCare staff seated at your table (optional)
- › Brand acknowledgement in the event program
- › Half page advertisement in the program
- › Audiovisual brand acknowledgement at the event
- › Acknowledgement by the host during the function

Corporate Sponsor Opportunities

Epworth
Medical
Foundation



CORPORATE SPONSOR

\$5,750

Benefits:

- > Table of ten seated in a prominent location
- > Brand signage on table
- > Brand acknowledgement in the event program
- > Audiovisual brand acknowledgement at the function
- > Acknowledgement in EMF newsletter
- > Acknowledgement on website

FURTHER INFORMATION

To discuss these sponsorship opportunities or for more information about the event please contact:

Chloe Rowarth

Acting Group Manager, Events

Epworth Medical Foundation

Phone: (03) 9426 8412 | Mobile: 0427 776 857

Email: Chloe.Rowarth@epworth.org.au